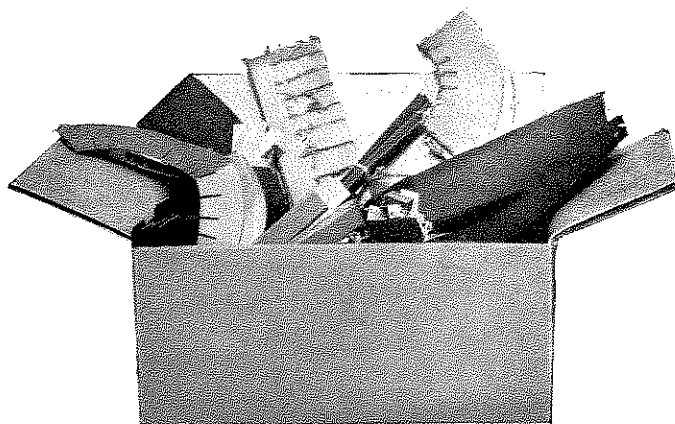
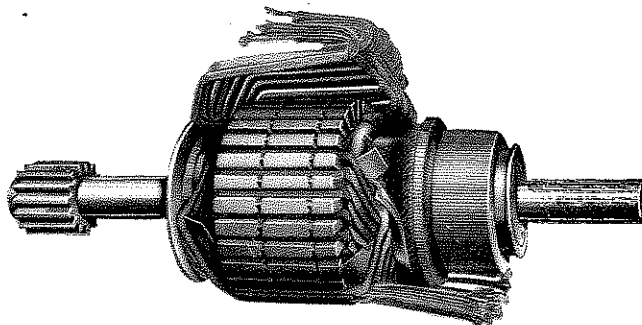




# Railway Motor Armature Insulations



Insulations are carefully packed in individual cartons containing the exact quantity of cut materials and clips necessary for winding one particular armature. They can be stocked without appreciable deterioration and are at all times ready for the winder's use.



Railway Motor Armature, Partially Wound

## Advantages of Ready-To-Use Insulations

1. All necessary pieces on hand
2. Cut to fit the particular armature
3. Prevent omission of essential parts
4. Save time in winding
5. No waste of materials
6. More economical than bulk insulation
7. Permit a factory job in the repair shop
8. Insure fewer renewals and better operation
9. Maintain original equipment quality

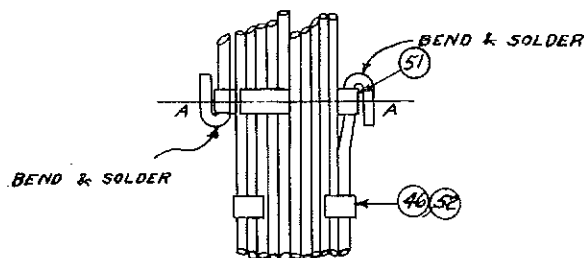
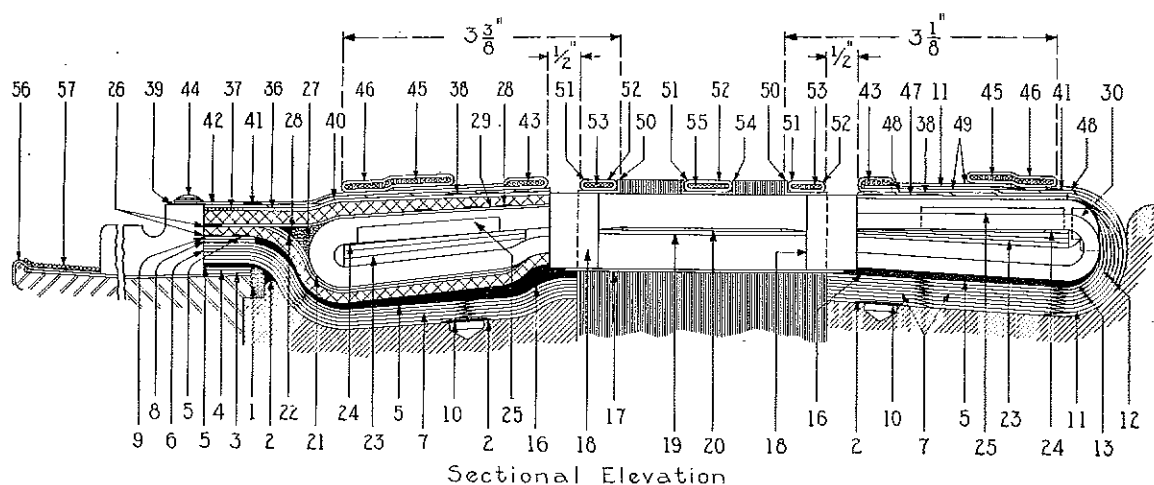
*Ask our nearest office for complete information*

**General Electric Company, Schenectady, N. Y.**

SALES OFFICES IN ALL LARGE CITIES



## Insulation Data for Typical Railway Motor—Type GE-265



### \*CORE DRESSING -

Part No.	Quant.	Material	Application
1	1	Boot Cord No.7, 25ft.0"	Filler Between Arm. Hd. and Comm.
2	3	Acme Tape .012"X $\frac{3}{4}$ "X12 ft.0"	Binder Over Parts Nos. 1 and 10
3	1	Untreated Horn Fibre	Strip Over Comm. Shell
4	2	Varnished Canvas	Strip Over Comm. Shell
5	6	Acme Tape .012"X $\frac{3}{4}$ "X18 ft.0"	Binder Over Parts Nos. 4, 6, 7, 8, 12 and 13
6	6	Varnished Cloth	Insulation (Comm. End)
7	2	Varnished Cloth	Insulation (Pin. and Comm. End)
8	1	Varnished Cloth	Strip Over Comm. Shell
9	1	Horn Fibre	Strip Over Comm. Shell
10	2	Horn Fibre	Strip Over Balance Holes
11	1	Cotton Drill	Hood (Pinion End)
12	3	Varnished Cloth	Insulation (Pinion End)
13	3	Varnished Cloth	Insulation (Pinion End)

\*Cat. No. 1639292G2 covers sufficient material to insulate one GE-265 core except tape and boot cord which are omitted because they are usually carried in bulk and cut to required length on the job.

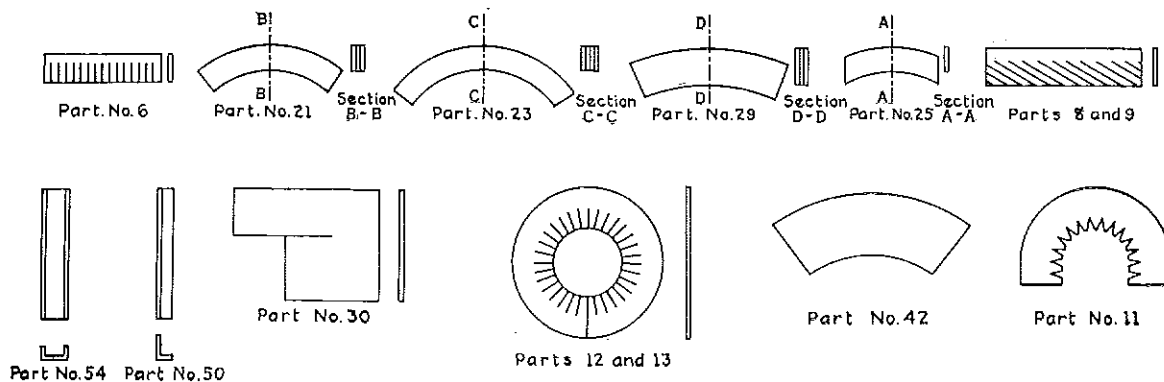


## Insulation Data for Typical Railway Motor—Type GE-265

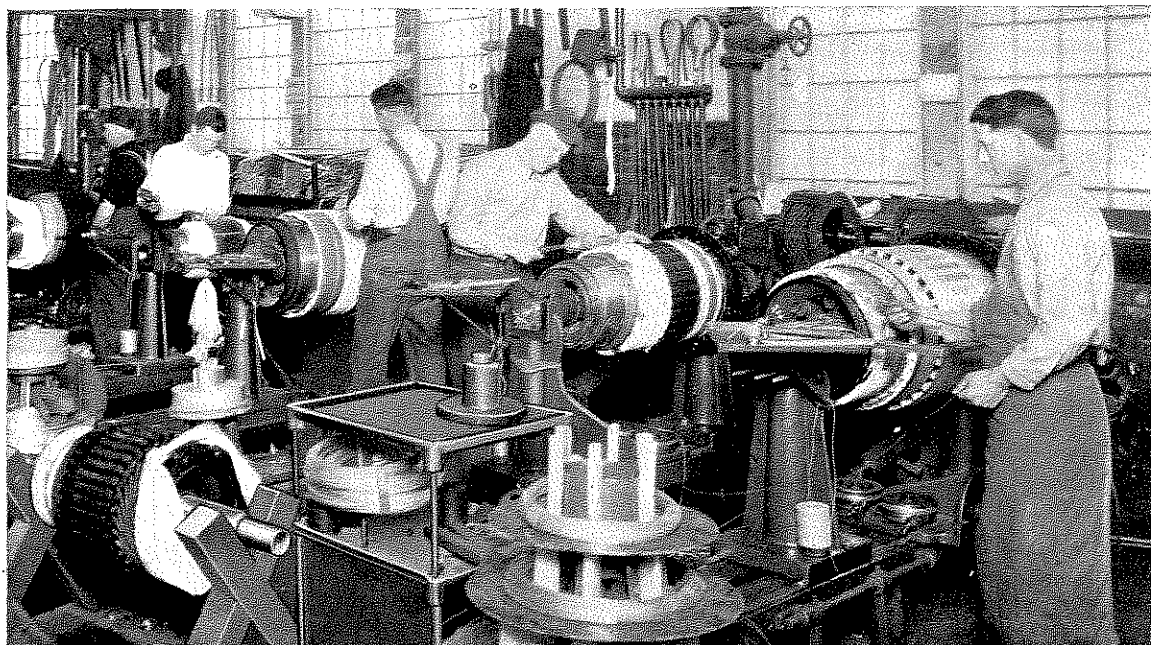
* WINDING AND CONNECTING INSULATION			
Part No.	Quant.	Material	Application
16	2	Acme Tape .012" X $\frac{3}{4}$ " X 15 ft. 0"	Cushion for Coils (Close to Punchings Both Ends)
17	25	Treated Press Board	Slot Strip, Bottom of Slot
18	50	Mica	Slot Armor (Both Ends)
19	25	Treated Press Board	Slot Strip (Between Upper and Lower Coils)
20	25	Treated Press Board	Slot Strip (Between Upper and Lower Coils)
21	2	Varnished Cloth and Treated Duck	Insulation (Between Bottom Leads and Coils)
22	1	Acme Tape .012" X $\frac{3}{4}$ " X 6 ft. 0"	Binding Over Part No. 21
23	4	Varnished Cloth, Treated Duck, Treated Muslin	Insulation (Between Upper and Lower Coils Both Ends)
24	6	Treated Press Board	Strip (To Stiffen End Loops Both Ends)
25	40	Treated Press Board	Spacer Bet. Adjacent Coils (Both Ends)
26	1	Non Elastic Webbing	Strip (Between Lower Leads Next to Commutator) Comm. End
27	1	Treated Rope	Filler (Between Leads at End of Coil)
28	2	Acme Tape .012" X $\frac{3}{4}$ " X 8 ft. 0"	Binder Over Parts Nos. 27 and 29
29	6	Varnished Cloth and Treated Duck	Insulation (Between Upper Leads and Coil)
30	25	Treated Drill	Patch (Between Adjacent Coils and Loops) Pinion End

* TOP DRESSING, BINDING AND CLIPS			
Part No.	Quant.	Material	Application
36	1	Treated Duck	Insulation Base (Comm. End)
37	1	Boot Cord No. 7, .040" X 68 ft. 0"	Filler Over Leads (Close to Comm. Ear)
38	2	Acme Tape .012" X $\frac{3}{4}$ " X 5 ft. 6"	Binder Over Parts Nos. 36 and 47
39	1	Acme Tape .012" X $\frac{3}{4}$ " X 5 ft. 0"	Insulation (Two Layers Over Comm. Ears)
40	1	Varnished Cloth	Insulation (Comm. End)
41	2	Acme Tape .012" X $\frac{3}{4}$ " X 16 ft. 0"	Binder Over Parts Nos. 40 and 48
42	1	Duck	Body Band (Comm. End)
43	2	Boot Cord No. 7, .040" X 32 ft. 0"	Binder Over Parts Nos. 11 and 42
44	1	Stay Binding	Binder for Part No. 42 (Cover Edge Comm. End)
45	2	Tinned Steel Wire .045" X 102 ft. 0"	Binding Band (38 Turns) (Comm. and Pinion End Winding)
46	16	Tinned Steel	Clip for Part No. 45
47	1	Treated Duck	Insulation Base (Pinion End)
48	1	Varnished Cloth	Insulation (Pinion End)
49	1	Cotton Drill	Dummy Hood (Pinion End)
50	2	Treated Horn Fibre	Strip Under Part No. 53
51	6	Tinned Steel	Tie Clip (For Parts Nos. 53 and 55) Two Each
52	18	Tinned Steel	Clip for Parts Nos. 53 and 55
53	2	Tinned Steel Wire .045" X 34 ft. 0"	Binding Band (11 Turns) (Core Ends)
54	1	Treated Horn Fibre	Strip Under Part No. 55
55	1	Tinned Steel Wire .045" X 34 ft. 0"	Binding Band (12 Turns) (Core)
56	1	Non Elastic, Webbing	Insulation (Over Bead of Comm. Cap)
57	1	Treated Cord	Binder Over Part No. 56

\*Cat. No. 269656 covers sufficient material to rewind one GE-265 armature except tape, wire and boot cord which are omitted because they are usually carried in bulk and cut to required length on the job. Parts 56 and 57 are not needed in rewinding and are not included in this Cat. No.



Insulation Details For GE-265 Armature



G-E Service Shop used exclusively for the repair of customers' apparatus

